



# Standard Test Method for Flexural Performance of Fiber-Reinforced Concrete (Using Beam With Third-Point Loading)<sup>1</sup>

This standard is issued under the fixed designation C 1609/C 1609M; the number immediately following the designation indicates the year of original adoption or, in the case of revision, the year of last revision. A number in parentheses indicates the year of last reappraisal. A superscript epsilon (ε) indicates an editorial change since the last revision or reappraisal.

## 1. Scope\*

1.1 This test method evaluates the **flexural performance of fiber-reinforced concrete** using parameters derived from the load-deflection curve obtained by testing a simply supported beam under third-point loading using a closed-loop, servo-controlled testing system.

1.2 This test method provides for the determination of first-peak and peak loads and the corresponding stresses calculated by inserting them in the formula for modulus of rupture given in Eq 1. It also requires determination of residual loads at specified deflections, and the corresponding residual strengths calculated by inserting them in the formula for modulus of rupture given in Eq 1 (see **Note 1**). At the option of the specifier of tests, it provides for determination of specimen toughness based on the area under the load-deflection curve up to a prescribed deflection (see **Note 2**).

**NOTE 1**—Residual strength is not a true stress but an engineering stress computed using simple engineering bending theory for linear elastic materials and gross (uncracked) section properties.

**NOTE 2**—Specimen toughness expressed in terms of the area under the load-deflection curve is an indication of the energy absorption capability of the particular test specimen, and its magnitude depends directly on the geometry of the test specimen and the loading configuration.

1.3 This test method utilizes two preferred specimen sizes of 100 by 100 by 350 mm [4 by 4 by 14 in.] tested on a 300 mm [12 in.] span, or 150 by 150 by 500 mm [6 by 6 by 20 in.] tested on a 450 mm [18 in.] span. A specimen size different from the two preferred specimen sizes is permissible.

1.4 **Units**—The values stated in either SI units or inch-pound units are to be regarded separately as standard. The values stated in each system may not be exact equivalents; therefore, each system shall be used independently of the other. Combining values from the two systems may result in non-conformance with the standard.

1.5 *This standard does not purport to address all of the safety concerns, if any, associated with its use. It is the responsibility of the user of this standard to establish appropriate*

*appropriate safety and health practices and determine the applicability of regulatory limitations prior to use.*

## 2. Referenced Documents

2.1 *ASTM Standards:*<sup>2</sup>

**C 31/C 31M** Practice for Making and Curing Concrete Test Specimens in the Field

**C 42/C 42M** Test Method for Obtaining and Testing Drilled Cores and Sawed Beams of Concrete

**C 78** Test Method for Flexural Strength of Concrete (Using Simple Beam with Third-Point Loading)

**C 125** Terminology Relating to Concrete and Concrete Aggregates

**C 172** Practice for Sampling Freshly Mixed Concrete

**C 192/C 192M** Practice for Making and Curing Concrete Test Specimens in the Laboratory

**C 823** Practice for Examination and Sampling of Hardened Concrete in Constructions

**C 1140** Practice for Preparing and Testing Specimens from Shotcrete Test Panels

## 3. Terminology

3.1 **Definitions**—The terms used in this test method are defined in Terminology **C 125**.

3.2 **Definitions of Terms Specific to This Standard:**

3.2.1 **end-point deflection**—the deflection value on the load-deflection curve equal to  $1/150$  of the span length, or a larger value as specified at the option of the specifier of tests.

3.2.2 **first-peak load**,  $P_1$ —the load value at the first point on the load-deflection curve where the slope is zero.

3.2.3 **first-peak deflection**,  $\delta_1$ —the net deflection value on the load-deflection curve at first-peak load.

3.2.4 **first-peak strength**  $f_1$ —the stress value obtained when the first-peak load is inserted in the formula for modulus of rupture given in Eq 1.

3.2.5 **load-deflection curve**—the plot of load versus net deflection of a flexural beam specimen loaded to the end-point deflection.

<sup>1</sup> This test method is under the jurisdiction of ASTM Committee C09 on Concrete and Concrete Aggregates and is the direct responsibility of Subcommittee C09.42 on Fiber-Reinforced Concrete.

Current edition approved Dec. 15, 2007. Published January 2008. Originally approved in 2005. Last previous edition approved in 2006 as C 1609/C 1609M – 06.

<sup>2</sup> For referenced ASTM standards, visit the ASTM website, www.astm.org, or contact ASTM Customer Service at service@astm.org. For *Annual Book of ASTM Standards* volume information, refer to the standard's Document Summary page on the ASTM website.

\*A Summary of Changes section appears at the end of this standard.

3.2.6 *net deflection*—the deflection measured at mid-span of a flexural beam specimen exclusive of any extraneous effects due to seating or twisting of the specimen on its supports or deformation of the support and loading system.

3.2.7 *peak load*,  $P_p$ —the maximum load on the load-deflection curve.

3.2.8 *peak-load deflection*,  $\delta_p$ —the net deflection value on the load-deflection curve at peak load.

3.2.9 *peak strength*,  $f_p$ —the stress value obtained when the peak load is inserted in the formula for modulus of rupture given by Eq 1.

3.2.10  $D$ —nominal depth of the beam specimen in mm.

NOTE 3—To simplify nomenclature, the nominal beam depth is shown in units of mm for both the SI and inch-pound version of this test method.

3.2.11  $L$ —span length or distance between the supports.

3.2.12 *residual load*,  $P_{600}^D$  —the load value corresponding to a net deflection of  $L/600$  for a beam of nominal depth  $D$ .

3.2.13 *residual load*,  $P_{150}^D$  —the load value corresponding to a net deflection of  $L/150$  for a beam of nominal depth  $D$ .

3.2.14 *residual strength*,  $f_{600}^D$  —the stress value obtained when the residual load  $P_{600}^D$  is inserted in the formula for modulus of rupture given in Eq 1.

3.2.15 *residual strength*,  $f_{150}^D$  —the stress value obtained when the residual load  $P_{150}^D$  is inserted in the formula for modulus of rupture given in Eq 1.

3.2.16 *specimen toughness*,  $T_{150}^D$  —toughness of beam specimen of nominal depth  $D$  at a net deflection of  $L/150$ .

#### 4. Summary of Test Method

4.1 Molded or sawn beam specimens having a square cross-section of fiber-reinforced concrete are tested in flexure using a third-point loading arrangement similar to that specified in Test Method C 78 but incorporating a closed-loop, servo-controlled testing system and roller supports that are free to rotate on their axes. Load and net deflection are monitored and recorded to an end-point deflection of at least  $1/150$  of the span. Data are recorded and plotted by means of an X-Y plotter, or they are recorded digitally and subsequently used to plot a load-deflection curve. Points termed first-peak, peak, and residual loads at specified deflections are identified on the curve, and are used to calculate flexural performance parameters.

#### 5. Significance and Use

5.1 The first-peak strength characterizes the flexural behavior of the fiber-reinforced concrete up to the onset of cracking, while residual strengths at specified deflections characterize the residual capacity after cracking. Specimen toughness is a measure of the energy absorption capacity of the test specimen. The appropriateness of each parameter depends on the nature of the proposed application and the level of acceptable cracking and deflection serviceability. Fiber-reinforced concrete is influenced in different ways by the amount and type of fibers in the concrete. In some cases, fibers may increase the residual load and toughness capacity at specified deflections while producing a first-peak strength equal to or only slightly greater than the flexural strength of the concrete without fibers. In other cases, fibers may significantly increase the first-peak and

peak strengths while affecting a relatively small increase in residual load capacity and specimen toughness at specified deflections.

5.2 The first-peak strength, peak strength, and residual strengths determined by this test method reflect the behavior of fiber-reinforced concrete under static flexural loading. The absolute values of energy absorption obtained in this test are of little direct relevance to the performance of fiber-reinforced concrete structures since they depend directly on the size and shape of the specimen and the loading arrangement.

5.3 The results of this test method may be used for comparing the performance of various fiber-reinforced concrete mixtures or in research and development work. They may also be used to monitor concrete quality, to verify compliance with construction specifications, obtain flexural strength data on fiber-reinforced concrete members subject to pure bending, or to evaluate the quality of concrete in service.

5.4 The results of this standard test method are dependent on the size of the specimen.

NOTE 4—The results obtained using one size molded specimen may not correspond to the performance of larger or smaller molded specimens, concrete in large structural units, or specimens sawn from such units. This difference may occur because the degree of preferential fiber alignment becomes more pronounced in molded specimens containing fibers that are relatively long compared with the cross-sectional dimensions of the mold. Moreover, structural members of significantly different thickness experience different maximum crack widths for a given mid-span deflection with the result that fibers undergo different degrees of pull-out and extension.

#### 6. Apparatus

6.1 *Testing Machine*—The testing machine shall be capable of servo-controlled operation where the net deflection of the center of the beam is measured and used to control the rate of increase of deflection. Testing machines that use stroke displacement control or load control are not suitable for establishing the portion of the load-deflection curve immediately after first-peak. The loading and specimen support system shall be capable of applying third-point loading to the specimen without eccentricity or torque. The fixtures specified in Test Method C 78 are suitable with the qualification that supporting rollers shall be able to rotate on their axes and shall not be placed in grooves or have other restraints that prevent their free rotation.

6.2 *Deflection-Measuring Equipment*—Devices such as electronic transducers or electronic deflection gages shall be located in a manner that ensures accurate determination of the net deflection at the mid-span exclusive of the effects of seating or twisting of the specimen on its supports. One acceptable arrangement employs a rectangular jig, which surrounds the specimen and is clamped to it at mid-depth directly over the supports (Figs. 1 and 2). Two electronic displacement transducers or similar digital or analog devices mounted on the jig at mid-span, one on each side, measure deflection through contact with appropriate brackets attached to the specimen. The average of the measurements represents the net deflection.

6.3 *Data Recording System*—An X-Y plotter coupled directly to electronic outputs of load and deflection is an acceptable means of obtaining the relationship between load and net deflection—that is, the load-deflection curve. A data



FIG. 1 Arrangement to Obtain Net Deflection by Using Two Transducers Mounted on Rectangular Jig Clamped to Specimen Directly Above Supports

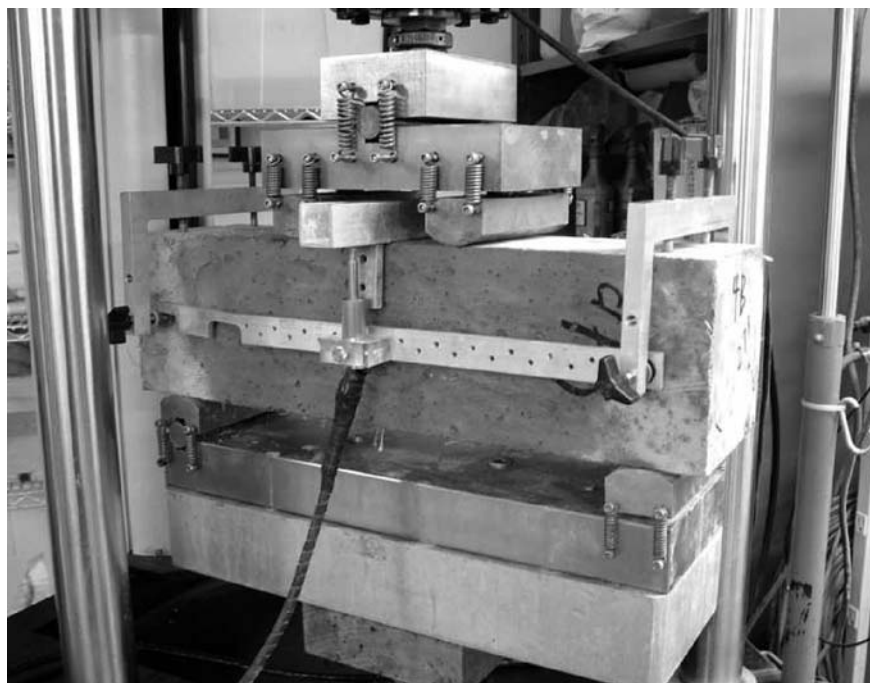


FIG. 2 Arrangement to Obtain Net Deflection by Using Two Transducers Mounted on Jig Secured to Specimen Directly Above Supports

acquisition system capable of digitally recording and storing load and deflection data at a sampling frequency of at least 2.5 Hz is an acceptable alternative. After a net deflection of  $L/600$  has been exceeded, it is permissible to decrease the data acquisition sampling and recording frequency to 1 Hz.

NOTE 5—For X-Y plotters, accurate determination of the area under the load-deflection curve and the loads corresponding to specified deflections is only possible when the scales chosen for load and deflection are reasonably large. A load scale chosen such that 25 mm [1 in.] corresponds to a flexural stress of the order of 1 MPa [150 psi], or no more than 20 % of the estimated first-peak strength, is recommended. A recommended

deflection scale is to use 25 mm [1 in.] to represent about 10 % of the end-point deflection of  $1/150$  of the span, which is 2 mm [0.08 in.] for a 350 by 100 by 100 mm [14 by 4 by 4 in.] specimen size, and 3 mm [0.12 in.] for a 500 by 150 by 150 mm [20 by 6 by 6 in.] specimen size. When data are digitally stored, the test parameters may be determined directly from the stored data or from a plot of the data. In the latter case, use a plot scale similar to that recommended for an X-Y plotter.

## 7. Sampling, Test Specimens, and Test Units

7.1 *General Requirements*—The nominal maximum size of aggregate and cross-sectional dimensions of test specimens shall be in accordance with Practice C 31/C 31M or Practice C 192/C 192M when using molded specimens, or in accordance with Test Method C 42/C 42M when using sawn specimens, provided that the following requirements are satisfied:

7.1.1 The length of test specimens shall be at least 50 mm [2 in.] greater than three times the depth, and in any case not less than 350 mm [14 in.]. The length of the test specimen shall not be more than two times the depth greater than the span.

7.1.2 The tolerances on the cross-section of the test specimens shall be within  $\pm 2\%$ . The test specimens shall have a square cross-section within these tolerances.

7.1.3 The width and depth of test specimens shall be at least three times the maximum fiber length.

7.1.4 When the specimen size is not large enough to meet all the requirements of 7.1-7.1.3, specimens of square cross-section large enough to meet the requirements shall be used. The three times maximum fiber length requirement for width and depth may be waived at the option of the specifier of tests to permit specimens with a width and depth of 150 mm [6 in.] when using fibers of length 50 to 75 mm [2 to 3 in.].

NOTE 6—The results of tests on beams with relatively stiff fibers, such as steel fibers, longer than one-third the width and depth of the beam may not be comparable with test results of similar-sized beams with fibers shorter than one-third the width and depth because of preferential fiber alignment, and different size beams may not be comparable because of size effects. The degree of preferential fiber alignment may be less for fibers that are flexible enough to be bent by contact with aggregate particles or mold surfaces than for rigid fibers that remain straight during mixing and specimen preparation.

7.2 *Freshly Mixed Concrete*—Obtain samples of freshly mixed fiber-reinforced concrete for the preparation of test specimens in accordance with Practice C 172.

7.2.1 Mold specimens in accordance with Practice C 31/C 31M or Practice C 192/C 192M, except that consolidation shall be by external vibration. Consolidation may be considered to be adequate when entrapped air voids are no longer observed rising to the surface of the specimen. Fill the mold in one layer by using a wide shovel or scoop parallel to the length of the mold to place the layer uniformly along the length of the mold.

NOTE 7—Make sure that the time of vibration is sufficient to ensure adequate consolidation, as fiber-reinforced concrete requires a longer vibration time than concrete without fibers, especially when the fiber concentration is relatively high.

7.2.2 When filling the mold, attempt to add an amount of concrete that will exactly fill the mold after consolidation. When screeding the top surface, continue external vibration to ensure that fibers do not protrude from the finished surface.

7.2.3 Curing shall be in accordance with Practice C 31/C 31M or Practice C 192/C 192M.

7.3 *Hardened Concrete*—Select samples of hardened fiber-reinforced concrete from structures in accordance with Practice C 823.

7.3.1 Prepare and condition sawn specimens in accordance with Test Method C 42/C 42M.

7.4 Prepare specimens from shotcrete panels in accordance with Practice C 1140.

7.5 *Test Unit*—Prepare and test at least three specimens from each sample of fresh or hardened concrete.

## 8. Evaporation Control

8.1 When the time between removal of test specimens from a moist curing environment and the start of testing is likely to exceed 15 min, minimize drying by covering with wet burlap, applying a curing compound, or by other appropriate techniques.

## 9. Procedure

9.1 Molded or sawn specimens shall be turned on their side with respect to the position as cast before placing on the support system. Specimens representing shotcrete shall be loaded in the same direction as the specimen was shot.

9.2 Arrange the specimen and the loading system so that the specimen is loaded at the third points in accordance with Test Method C 78. The span length shall be three times the specimen depth or 300 mm [12 in.], whichever is greater.

NOTE 8—If full contact cannot be reasonably assured between the specimen, the load-applying devices, and the supports before loading, grind the contact surfaces of the specimen so that full contact is achieved. Alternatively, use capping materials at the load or support points.

9.3 Operate the testing machine so that the net deflection of the specimen increases at a constant rate. For a 350 by 100 by 100 mm [14 by 4 by 4 in.] specimen size, the rate of increase of net deflection shall be within the range 0.05 to 0.10 mm/min [0.002 to 0.004 in./min] until a net deflection of  $L/600$  is reached. After that, the rate of increase of net deflection shall be within the range 0.05 to 0.20 mm/min [0.002 to 0.008 in./min] until the specified end-point deflection is reached. For a 500 by 150 by 150 mm [20 by 6 by 6 in.] specimen size, the rate of increase of net deflection shall be within the range 0.06 to 0.12 mm/min [0.002 to 0.005 in./min] until a net deflection of  $L/600$  is reached. After that, the rate of increase of net deflection shall be within the range 0.06 to 0.24 mm/min [0.002 to 0.010 in./min] until the specified end-point deflection is reached. The corresponding rate for other sizes and shapes of specimens shall be based on reaching the first-peak deflection 30 to 60 s after the start of the test.

NOTE 9—First-peak deflection for third-point loading is estimated assuming linear-elastic behavior up to first peak from the equation:

$$\delta_1 = \frac{23P_1L^3}{1296EI} \left[ 1 + \frac{216d^2(1 + \mu)}{115L^2} \right]$$

where:

$\delta_1$  = the first peak deflection, mm [in.]

$P_1$  = the first-peak load, N [lbf]

$L$  = the span length, mm [in.]

$E$  = the estimated modulus of elasticity of the concrete, MPa [psi]

$I$  = the cross-sectional moment of inertia, mm<sup>4</sup> [in.<sup>4</sup>]

$d$  = the average depth of specimen at the fracture, as oriented for testing, mm [in.] and

$\mu$  = Poisson's ratio

For a Poisson's ratio of 0.20 and a  $d$  to  $L$  ratio of 1/3, the value of the portion of the equation in brackets is 1.25.

NOTE 10—For a 350 by 100 by 100 mm [14 by 4 by 4 in.] specimen

size, the net deflection at first-peak load is approximately 0.04 mm [0.0016 in.], and for a 500 by 150 by 150 mm [20 by 6 by 6 in.] specimen size, it is approximately 0.05 mm [0.002].

9.4 When using deflection-measuring equipment for the first time, or after alterations or maintenance, confirm the reliability of the measured net deflection by comparing the measured deflection at first-peak load with the value estimated from the formula in Note 9.

9.5 Unless otherwise required by the specifier of tests, terminate the test at a net deflection of  $1/150$  of the span.

9.6 Further testing to a greater end-point deflection shall be specified at the option of the specifier of tests, and shall be specified as the span divided by some whole number less than 150.

9.7 Make two measurements of the specimen depth and width adjacent to the fracture (one on each face of the specimen) to the nearest 1 mm [0.05 in.] to determine the average depth and width.

9.8 Determine the position of the fracture by measuring the distance along the middle of the tension face from the fracture to the nearest point of support.

9.9 When the fracture occurs outside the middle third of the span, discard the results.

**10. Calculation**

10.1 Values of load and deflection used in subsequent calculations shall be obtained from the load-deflection curve, or from stored digital data.

10.2 Determine the first-peak load as that value of load corresponding to the first point on the load-deflection curve where the slope is zero, that is, **the load is a local maximum value**. Determine the corresponding deflection value. See Figs. 3 and 4.

NOTE 11—Small ripples or fluctuations in the load-deflection curve due to electronic noise or mechanical vibration should not be confused with a definite change in the slope of the load-deflection curve in the vicinity of first peak load, particularly when the portion of the curve in question is magnified.

10.3 Calculate the first-peak strength using the first-peak load determined in 10.2, the average specimen dimensions determined in 9.7, and the following formula for modulus of rupture:

$$f = \frac{PL}{bd^2} \tag{1}$$

where:

- $f$  = the strength, MPa [psi],
- $P$  = the load, N [lbf],
- $L$  = the span length, mm [in.],
- $b$  = the average width of the specimen at the fracture, as oriented for testing, mm [in.], and
- $d$  = the average depth of the specimen at the fracture, as oriented for testing, mm [in.].

10.3.1 Record the number rounded to the nearest 0.05 MPa [5 psi] as the first-peak strength,  $f_1$ .

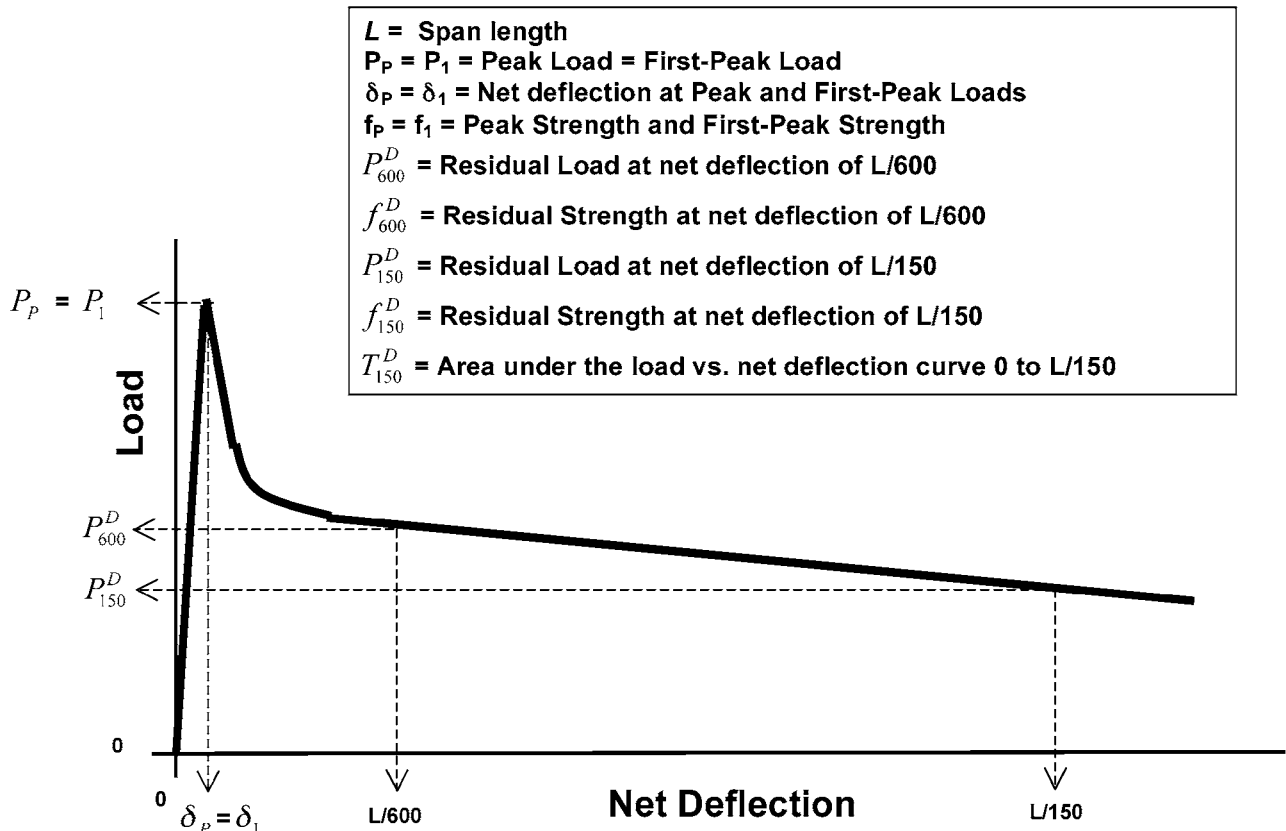


FIG. 3 Example of Parameter Calculations for First-Peak Load Equal to Peak Load (Not to Scale)

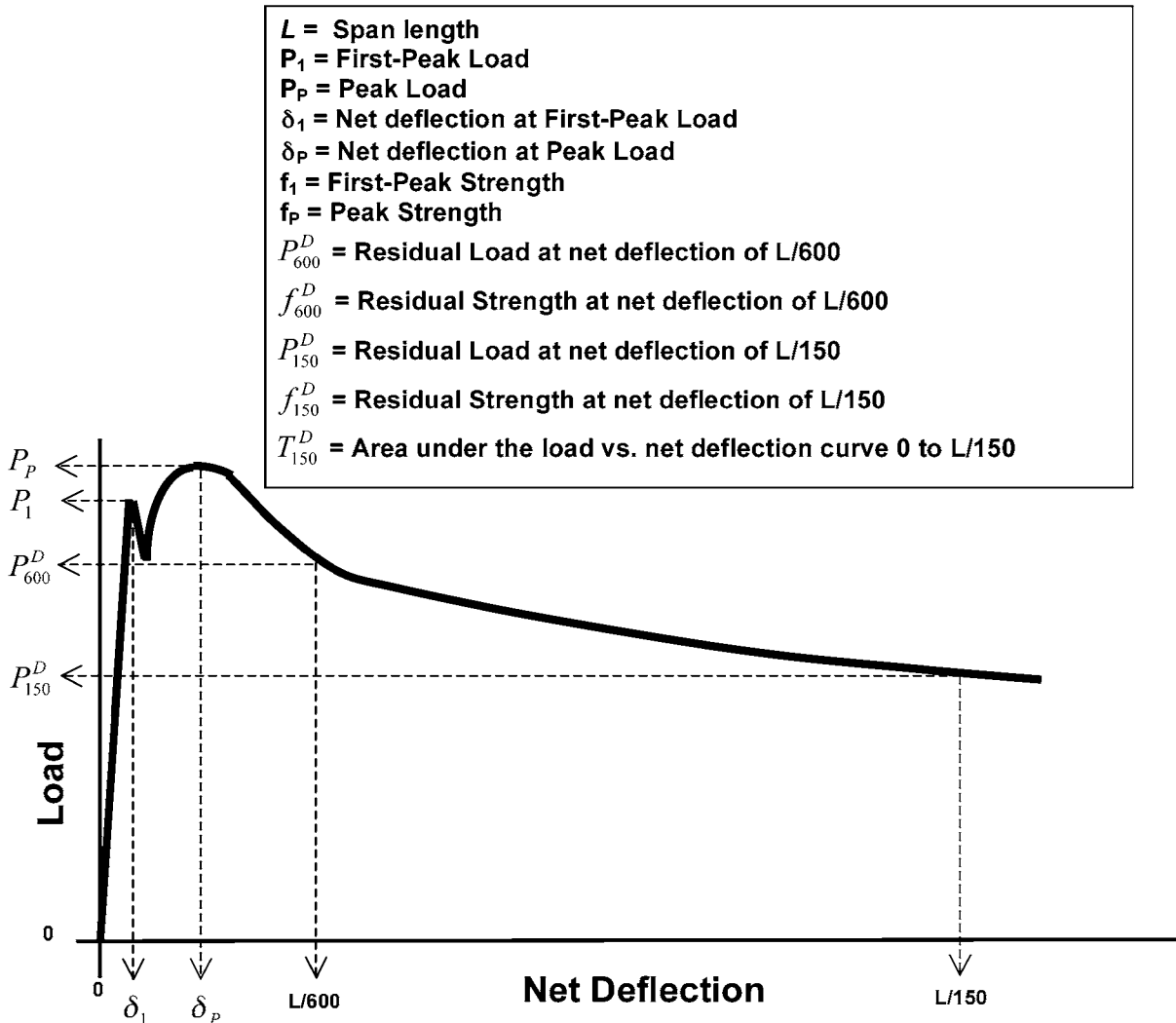


FIG. 4 Example of Parameter Calculations when Peak Load is Greater than First-Peak Load (Not to Scale)

10.4 Determine the peak load as that value of load corresponding to the point on the load-deflection curve that corresponds to the greatest value of load obtained prior to reaching the end-point deflection. Determine the corresponding deflection value.

10.5 Calculate the peak strength using the peak load determined in 10.4, the average specimen dimensions determined in 9.7, and Eq 1. Record the number rounded to the nearest 0.05 MPa [5 psi] as the peak strength,  $f_p$ .

10.6 Determine the residual load values,  $P_{600}^D$  and  $P_{150}^D$  as appropriate for the specimen depth, corresponding to net deflection values of  $1/600$  and  $1/150$  of the span length.

10.7 Calculate the residual strengths,  $f_{600}^D$  and  $f_{150}^D$  using the residual loads determined in 10.6, the average specimen dimensions determined in 9.7, and Eq 1. Record the numbers rounded to the nearest 0.05 MPa [5 psi] as the residual strengths,  $f_{600}^D$  and  $f_{150}^D$  as appropriate for the specimen depth.

10.8 When required by the specifier of tests, determine the residual load(s) and calculate the residual strength(s) at the values of net deflection required by the specifier of tests at value(s) greater than  $1/600$  of the span length using the proce-

dures in this section. Record the calculated value(s) rounded to the nearest 0.05 MPa [5 psi] using the appropriate superscript and subscript(s) to indicate the specimen depth and net deflection(s) selected.

For a specified net deflection  $\delta$  the subscript XXX is calculated as:

$$XXX = \frac{L}{\delta} \quad (2)$$

10.9 When required by the specifier of tests, calculate the total area under the load-deflection curve up to a net deflection of  $1/150$  of the span length. Record the number rounded to the nearest Joule [10 in.-lb] as toughness,  $T_{150}^D$  as appropriate for the specimen depth.

NOTE 12—If the load and deflection are measured in consistent units, such as Newtons (N) and metres (m), or kilonewtons (kN) and millimetres (mm), the resulting measure of energy will be in units known as Joules (J).

## 11. Report

11.1 Report the following information:

11.1.1 Type of specimen (molded or sawn) and specimen identification numbers or symbols,

11.1.2 Average width and depth of specimen at the point of fracture to the nearest 1 mm [0.05 in.],

11.1.3 Span length to the nearest 2 mm [0.1 in.],

11.1.4 First-peak load,  $P_1$ , rounded to the nearest N (lbf), first-peak strength,  $f_1$ , to the nearest 0.05 MPa [5 psi], and first-peak deflection,  $\delta_1$ , to the nearest 0.01 mm [0.0005 in.],

11.1.5 Peak load,  $P_p$ , rounded to the nearest N [lbf], peak strength,  $f_p$ , to the nearest 0.05 MPa [5 psi], and peak-load deflection,  $\delta_p$ , to the nearest 0.01 mm [0.0005 in.],

11.1.6 Residual loads,  $P_{600}^D$  and  $P_{150}^D$  rounded to the nearest N [lbf],

11.1.7 Residual strengths,  $f_{600}^D$  and  $f_{150}^D$  rounded to the nearest 0.05 MPa [5 psi],

11.1.8 When required by the specifier of tests, toughness,  $T_{150}^D$  to the nearest Joule [10 in.-lb],

11.1.9 When required by the specifier of tests, the residual load(s),  $P_{XXX}^D$  and corresponding residual strength(s),  $f_{XXX}^D$ , rounded to the nearest N [lbf] and 0.05 MPa [5 psi],

11.1.10 Age of the specimens at the time of testing, in days,

11.1.11 Curing history and moisture condition of specimen at test,

11.1.12 Whether the specimen contact surfaces were ground or capped,

11.1.13 Defects in specimen prior to test and abnormalities in specimen behavior during test, and

11.1.14 The load-deflection curve.

## 12. Precision and Bias

12.1 *Precision*—Tables 1 and 2 provide the repeatability standard deviations for the various parameters measured in this test method (see Note 13). The reproducibility of this test method is being determined.

NOTE 13—The repeatability standard deviations were developed from analysis of a database composed of 26 sets of three or four replicate test specimens that were tested by one operator using a closed-loop, servo-controlled hydraulic universal-testing machine. A test result is the mean value for each set of replicate test specimens. The concrete mixtures tested contained various steel fibers (10 sets) or synthetic fibers (16 sets) at different fiber contents. All test specimens had nominal dimensions of 102 mm by 102 mm by 356 mm [4 in. by 4 in. by 14 in.] and were tested on a 305 mm [12 in.] span. The test specimens for each set were either molded beams (19 sets) or beams cut from shotcrete panels (7 sets).

12.2 *Bias*—This test method has no bias since the properties determined can only be defined in terms of this test method.

## 13. Keywords

13.1 fiber-reinforced concrete; first-peak strength; flexural toughness; peak strength; residual load; residual strength

**TABLE 1 Single-Operator Standard Deviations (SI units)**

	Minimum Test Result	Maximum Test Result	Pooled Within-Batch Standard Deviation, 1s	COV, %
$P_1$ , N	9868	27071	1543	7.7
$f_1$ , MPa	2.44	7.12	0.47	8.3
$\delta_1$ , mm	0.03	0.06	0.01	20.0
$P_p$ , N	9869	27071	1922	9.2
$f_p$ , MPa	2.44	7.46	0.57	9.7
$\delta_p$ , mm	0.03	2.44	0.52	71.1
$P_{150}^{100}$ , N	5193	18588	2108	17.6
$f_{150}^{100}$ , MPa	1.29	5.41	0.60	17.8
$P_{600}^{100}$ , N	4828	24076	2034	15.2
$f_{600}^{100}$ , MPa	1.20	7.00	0.63	16.4
$T_{600}^{100}$ , J	10	42	4	16.0

**TABLE 2 Single-Operator Standard Deviations (inch-pound units)**

	Minimum Test Result	Maximum Test Result	Pooled Within-Batch Standard Deviation, 1s	COV, %
$P_1$ , lbf	2218	6086	347	7.7
$f_1$ , psi	354	1031	67	8.2
$\delta_1$ , in.	0.0013	0.0023	0.0002	10.0
$P_p$ , lbf	2219	6086	432	9.2
$f_p$ , psi	354	1081	82	9.7
$\delta_p$ , in.	0.0013	0.0960	0.0204	140.61
$P_{150}^{100}$ , lbf	1167	4179	474	17.6
$f_{150}^{100}$ , psi	186	784	87	17.8
$P_{600}^{100}$ , lbf	1085	5413	457	15.2
$f_{600}^{100}$ , psi	173	1015	91	16.4
$T_{600}^{100}$ , in.-lbf	92	368	39	17.3



**SUMMARY OF CHANGES**

Committee C09 has identified the location of selected changes to this test method since the last issue, C 1609/C 1609M – 06, that may impact the use of this test method. (Approved December 15, 2007)

- (1) Simplified nomenclature (deleted old 3.2.10–3.2.19 and replaced it with new 3.2.10-3.2.16).
- (2) Added new **Note 3**.
- (3) Added new Eq 2.
- (4) Updated residual load(s), residual strength(s), and toughness parameters according to new nomenclature throughout the standard (including **Figs. 3 and 4** and **Tables 1 and 2**).
- (5) Changed “D” to “d” in new **Note 9** and Eq 1.
- (6) Changed “(in-lb units)” to “[in-lb units]” throughout the standard.

Committee C09 has identified the location of selected changes to this test method since the last issue, C 1609/C 1609M – 05, that may impact the use of this test method. (Approved December 15, 2006)

- (1) Added new **1.3**.
- (2) Revised **4.1**.
- (3) Added new **5.4**.
- (4) Revised **6.3**.
- (5) Added new **7.1.2**.
- (6) Revised **Section 9**.
- (7) Revised **10.3**.
- (8) Revised **Section 11**.

*ASTM International takes no position respecting the validity of any patent rights asserted in connection with any item mentioned in this standard. Users of this standard are expressly advised that determination of the validity of any such patent rights, and the risk of infringement of such rights, are entirely their own responsibility.*

*This standard is subject to revision at any time by the responsible technical committee and must be reviewed every five years and if not revised, either reapproved or withdrawn. Your comments are invited either for revision of this standard or for additional standards and should be addressed to ASTM International Headquarters. Your comments will receive careful consideration at a meeting of the responsible technical committee, which you may attend. If you feel that your comments have not received a fair hearing you should make your views known to the ASTM Committee on Standards, at the address shown below.*

*This standard is copyrighted by ASTM International, 100 Barr Harbor Drive, PO Box C700, West Conshohocken, PA 19428-2959, United States. Individual reprints (single or multiple copies) of this standard may be obtained by contacting ASTM at the above address or at 610-832-9585 (phone), 610-832-9555 (fax), or service@astm.org (e-mail); or through the ASTM website (www.astm.org).*